



## Basic products

---

# -OWNER'S MANUAL-

TABLE OF CONTENT

G2 CUBE + G2 LOW PROFILE CUBE	P.2
G2 ROWING CUBE	P.4
G2 EDGE CUBE <b>NEW</b>	P.5
G2 CORNER CUBE	P.6
G2 SERVICE CUBE	P.8
G2 CONNECTING PIN	P.10
CANDOCK SLIDING NUT	P.11
CANDOCK LUG CONNECTOR	P.12
CANDOCK NUT	P.13
CANDOCK SPACER	P.13

**\*\*\* Note that it is preferable to consult the manual on a COLORED printed version, or directly on your computer screen\*\*\***

\*The following instructions are guidelines to be followed. Candock will not be responsible for damages incurred by the non-compliance to these guide lines. All distributors are required and responsible to provide theoretical and practical training to clients on the complete use of the different dock systems. Candock inc. can not be held responsible in any way for any damages resulting from the fact that the client has not received adequate training.

## G2 CUBE + G2 LOW PROFILE CUBE

Available colors are GREY, BEIGE and BLUE  
 Other colors also available upon special request.



**Material/Composition :**  
 High-density polyethylene resin

**Surface :**  
 Anti-skid

**Dimensions :**  
 L x W : 48 cm (19") x 48 cm (19")  
 H : 36 cm (14")

**Dimensions (low profile cube) :**  
 L x W : 48 cm (19") x 48 cm (19")  
 H : 23 cm (9")

**Floating capacity :**  
 Cube: 68 kg (150 lbs.) per cube  
 or 272 kg per sq. m. (60 lbs. per sq. ft.)  
 Low profile cube : 50 kg (110 lbs.) per cube  
 or 210 kg per sq. m. (44 lbs. per sq. ft.)

**Weight :**  
 Cube: 5,5 kg (12 lbs.)  
 Low profile cube : 5 kg (11 lbs.)

**Needed tools :**  
 G2 key for pin "combo-pack"  
 Key for nut  
 or  
 Ratchet key for nut + ratchet tool

### TERMINOLOGY

**TABS:** Prominent grooved parts of the cube, which are located at different heights on each of the 4 corners of the "cube" (tab #1 to #4, #1 being the lowest and #4, the highest). These tabs are an integral part of the Candock system. When rallied in groups of 4, the cubes create a larger square. At the center of this square, 4 different tabs overlap each other. These tabs form a single opening and are meant to be coupled with our **CANDOCK SLIDING NUT** and **G2 CONNECTING PIN** to form a unique structure.

**PLUGS:** These watertight plugs are always found on the side of the cube that is between tab # 1 and # 4. These same plugs, made of breathable material, act as pressure release valves thus preventing any cube deformation which is due to temperature or altitude. Furthermore, these plugs prevent any condensation inside the cube.



### ASSEMBLY PROCEDURE

With the use of the provided tools, proceed following these few steps:

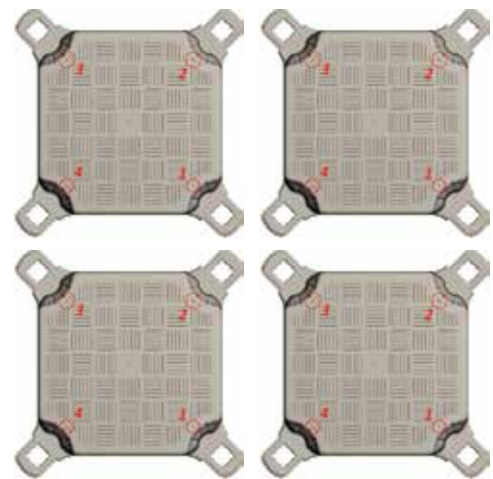
#### PRIOR TO INSTALLATION

\*During the installation of a dock, always have the plugs oriented towards the shore. This orientation will simply use less **CANDOCK SPACERS** and will improve the aesthetic of your dock. (\*If your configuration is meant to go along the shore line instead of off-shore, align plugs towards the shortest side of your dock)

\*\*Always make sure to regroup 4 different tabs height to complete your assembly. Make sure they are in their pre-destined position and that none of these are wrongly placed.

\*\*\*Preassemble the dock in larger sections directly on the ground. When in water, prepare the missing units of **G2 CONNECTING PINS** and **CANDOCK SLIDING NUTS** and position on the corresponding side of each sections. This will help you save time.

#### ORIENTATION OF TABS



## ASSEMBLY PROCEDURE

### PROCEDURE:

1- Prepare all items (basic products such as : **G2 CUBES**, **G2 CONNECTING PINS** and **CANDOCK SLIDING NUTS**) and have them unboxed close to your "assembly" area.

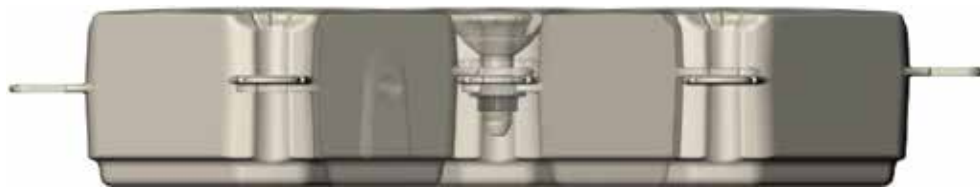
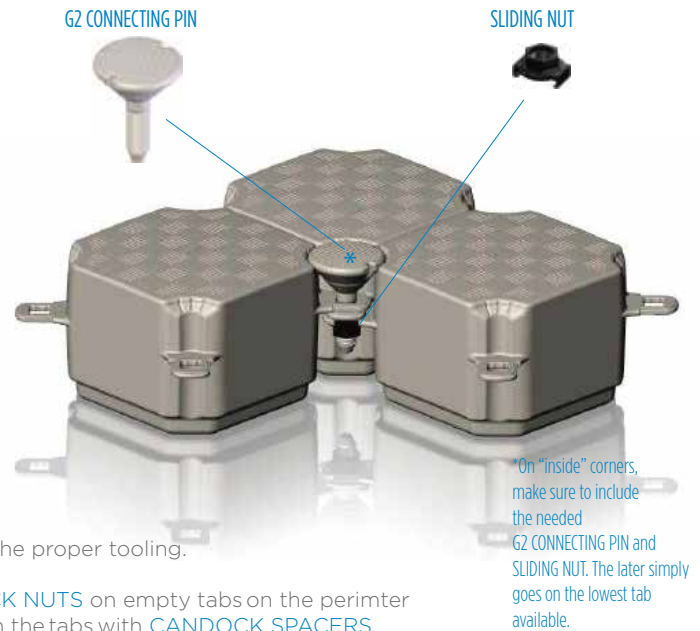
2- Place the **CANDOCK SLIDING NUTS** on the lower tabs (usually #1)



3- Position the sections next to each other and ensure that the tabs are positioned correctly.

4- Insert the **G2 CONNECTING PINS** in the tabs and screw-in using the proper tooling.

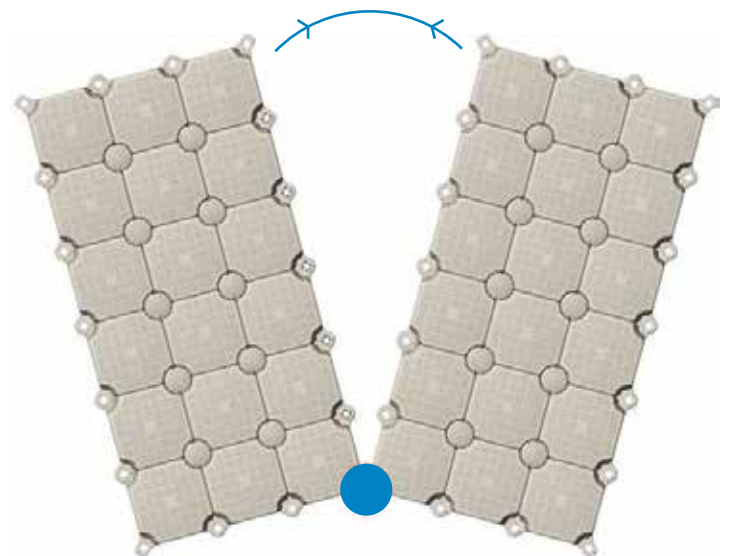
5- If necessary, place **CANDOCK LUG CONNECTORS** and **CANDOCK NUTS** on empty tabs on the perimeter of your dock. If necessary, do not forget to fill the space between the tabs with **CANDOCK SPACERS**.



### TIPS

### THE SCISSOR TECHNIQUE

While assembling bigger sections **on water**, place a **G2 CONNECTING PIN**, as shown on the picture. Then bring the two sections side by side while making sure that the **tabs** properly overlap each other. Then insert the missing pins. This technique will help you assemble big sections with ease.



## G2 ROWING CUBES

Available colors are GREY, BEIGE and BLUE  
 Other colors also available upon special request.



**Material/Composition :**  
 High-density polyethylene resin

**Surface :**  
 Anti-skid

**Dimensions :**  
 L x W : 48 cm (19") x 48 cm (19")  
 H : 23 cm (9")

**Freeboard :**  
 17 cm (7") under dead load  
 5 cm (2.5") under live load\*  
 \*100kg / sq.meter  
 or  
 \*20.35lbs/sq.feet

**Floating capacity :**  
 Variable

**Weight :**  
 5 kg (11 lbs.)

**Needed tools :**  
 G2 key for pin "combo-pack"  
 Key for nut  
 or  
 Ratchet key for nut + ratchet tool

**Certification/Approval**



<http://www.worldrowing.com/fisa/>

## TERMINOLOGY (also see G2 CUBE terminology)

**CAVITY:** Specially designed cavity located in center of the bottom face of the cube. This recess is intended to optimize freeboard height, (in regards with FISA regulations) between 2 and 7 inches (5 to 18 cm), depending on applied load (18 cm when under "DEAD LOAD" and 5 cm under "LIVE LOAD" ( 100kg / sp. meter )). Furthermore, this cavity is increasing the overall stability of the product when in use.

**STABILIZATION BARS:** Custom designed aluminum stiffening beams limiting overall inclination of our systems when they are destined to large scale competition installations and infrastructures. When properly fixed underneath G2 ROWING CUBE platforms, these aluminum beams prevent the platform's outskirts from plunging excessively in the water when groups of competitors (rowers) are walking on the edge of the platforms.

## ASSEMBLY PROCEDURE

Refer to the G2 CUBE assembly procedure.

## NOTE

If the product is destined to a major competition infrastructure, make sure to use the required STIFFENING BEAMS.  
 For additional support, please contact our main offices at [candock@candock.com](mailto:candock@candock.com).

**NEW**

**EDGE CUBES ( REGULAR AND CORNER )**

Available colors are GREY, BEIGE and BLUE  
 Other colors also available upon special request.



**Material/Composition :**  
 High-density polyethylene resin

**Needed tools :**  
 G2 key for pin

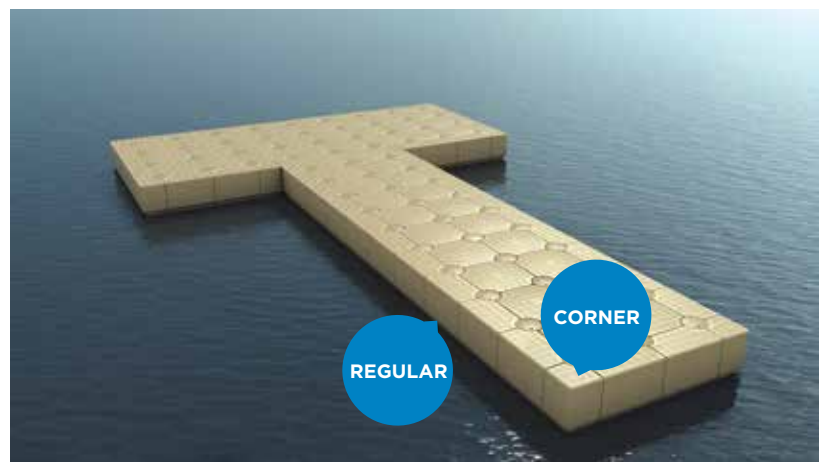
**Surface :**  
 Anti-skid

**Dimensions :**  
 regular: L x W : 24 cm (9.5") x 48 cm (19") H : 22 cm (9")  
 corner: L x W : 24 cm ( 9.5") x 24 cm ( 9.5") H :

**Weight :**  
 4kg / 9lbs

**TERMINOLOGY**

**EDGE CUBE:** Still using our regular "nut and pin" system on tabs, which are now located at different heights on 2 of the corners of Candock's **EDGE CUBE**, are still an integral part of the Candock system. When integrated to the perimeter of our regular **CUBES**, the **EDGE CUBE** creates a smoother and more aesthetic finish while eliminating any prominent pieces on the outskirts of your dock. The **EDGE CUBE** tabs are at different positions than the regular tabs #1 to #4. Indeed, the 2 needed tabs of the **EDGE CUBE** are positioned underneath every other tabs that are found on our cubes. Therefore, these are positioned at the same level as the regular **JETSLIDE** tabs. Numbered negative 1 and negative 2 ( **-1 being the highest and -2 being the lowest** ), these will always be positioned underneath the regular **G2 CUBES** tabs.

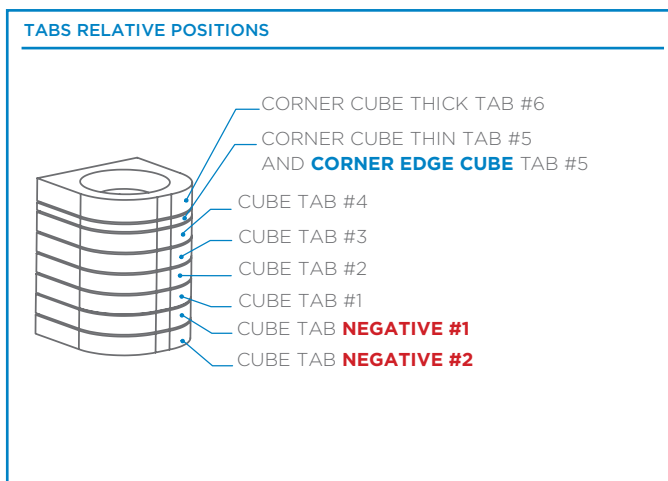


**CORNER EDGE CUBE:** Again, using our regular "nut and pin" system on a tab, which is now located on one corner of the Candock's **CORNER EDGE CUBE**. When integrated to the perimeter of our **G2 CUBES**, the **CORNER EDGE CUBES** create a smoother and more aesthetic finish on the outskirts corners of your dock while eliminating any prominent part sticking out of the structure. The **CORNER EDGE CUBE** tab is located at the exact same height as **tab #5** of the regular **G2 CORNER CUBE**.

**ASSEMBLY INSTRUCTION**

**BASIC RULES**

- Any tab must be replaced by a **CANDOCK SPACER** when missing.
- A **CANDOCK SLIDING NUT** will be required on the lowest tab available ( either **NEGATIVE #1** or **#2** ).
- When assembling the **CORNER EDGE CUBE**, make sure to include every needed spacer in order to obtain a perfectly flush top surface.



To validate your procedure, simply make sure that the top surfaces of your **EDGE CUBES** are perfectly even with the surfaces of the surrounding cubes.



**G2 EDGE CUBES ( REGULAR AND CORNER EDGE CUBE )**

Available colors are GREY, BEIGE and BLUE  
 Other colors also available upon special request.

ASSEMBLY INSTRUCTION ( SEQUENCE )

**PROCEDURE:**

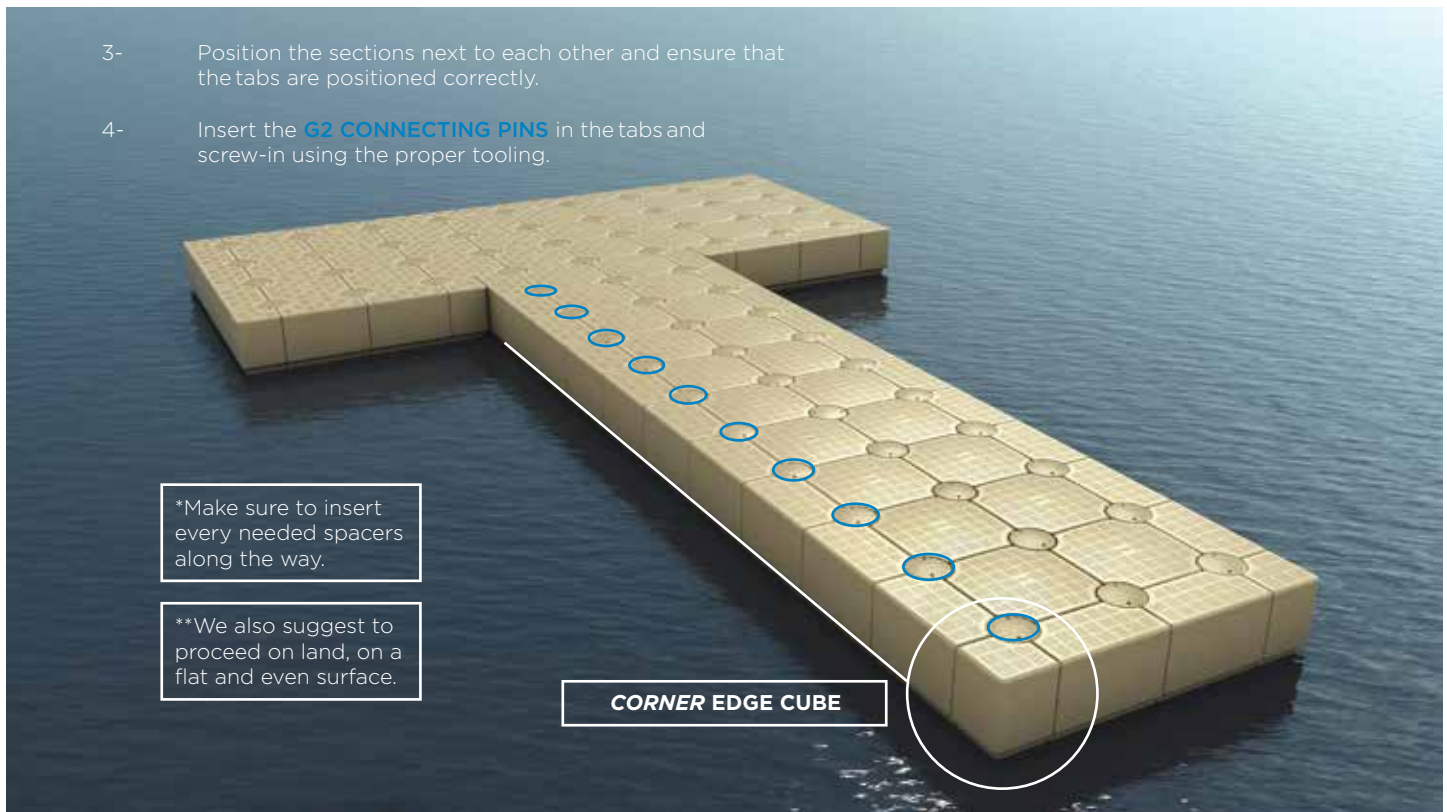
1- Prepare all items (basic products such as : **CORNER EDGE CUBES**, **EDGE CUBES**, **G2 CONNECTING PINS**, **CANDOCK SLIDING NUTS** and **SPACERS**) and have them unboxed close to your "assembly" area.

2- Place the **CANDOCK SLIDING NUTS** on the lowest available tabs (either **NEGATIVE #1** or **#2**).



3- Position the sections next to each other and ensure that the tabs are positioned correctly.

4- Insert the **G2 CONNECTING PINS** in the tabs and screw-in using the proper tooling.



\*Make sure to insert every needed spacers along the way.

\*\*We also suggest to proceed on land, on a flat and even surface.

**CORNER EDGE CUBE**

5-While assembling the **EDGE CUBES**, we also recommend that you tighten the **G2 CONNECTING PINS** as you go facilitate the assembly process.



## G2 CORNER CUBE

Available colors are GREY, BEIGE and BLUE  
Other colors also available upon special request.



**Material/Composition :**  
High-density polyethylene resin

**Surface :**  
Anti-skid

**Dimensions :**  
L x W : 48 cm (19") x 48 cm (19")  
H : 22 cm (9")

**Weight :**  
4kg / 9lbs

**Needed tools :**  
G2 key for pin "combo-pack"  
Key for nut  
or  
Ratchet key for nut + ratchet tool

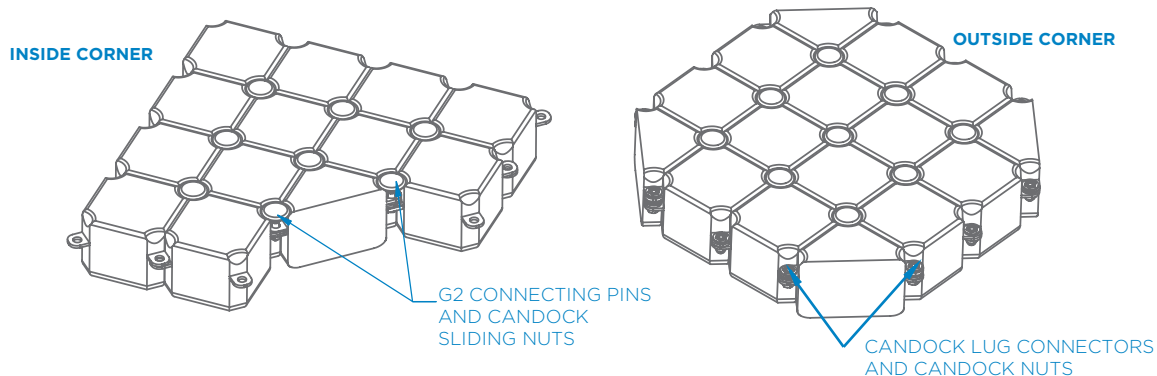
## TERMINOLOGY

**TABS:** Prominent parts of the cube, which are located at different heights on each of the 3 corners of Candock's **G2 CORNER CUBE**. These tabs are an integral part of the Candock system. When relied on an inside or outside corner, the **G2 CORNER CUBE** create either a smoother and more aesthetic finish ( outside corner ) or it simply creates usefull walking space on the inside of a corner. The **G2 CORNER CUBE** tabs are at different positions than tabs #1 to #4. Therefore we say the **G2 CORNER CUBE** uses tabs #5 and #6

## ASSEMBLY PROCEDURE

The **G2 CORNER CUBE** can be assembled on both **G2 CUBES** and **G2 LOW PROFILE CUBE**. The position of the 3 tabs of the **G2 CORNER CUBE** will allow to position the cube in any configuration you wish. The **G2 CORNER CUBE** tabs will be placed above **TAB #4** of the **G2 CUBE**.

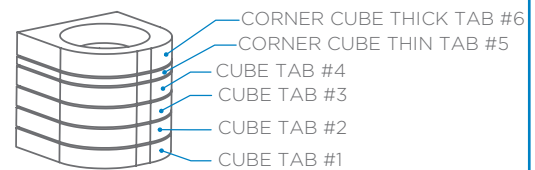
### OUTSIDE VS INSIDE CORNER



#### BASIC RULES

-ANY TAB FROM #1 TO #4 MUST BE REPLACED BY A **CANDOCK SPACER** WHEN MISSING, UNLESS THOSE SPACERS END-UP BELLOW THE LOWEST TAB PRESENT- IF A **CANDOCK SLIDING NUT** IS REQUIRED AND **TAB #1** IS NOT AVAILABLE, SIMPLY INSERT IT ON THE LOWEST TAB AVAILABLE.

#### TABS RELATIVE POSITIONS



To validate your procedure, simply make sure that the top surfaces of the **G2 CORNER CUBE** and other surrounding cubes are perfectly even.



## G2 SERVICE CUBE ( REGULAR, TRANSLUCENT AND SIDE COVER )

Available colors are GREY, BEIGE.  
Other colors also available upon special request.

Regular / Beige



### Options:

Regular / Grey



Regular / Translucent



Side cover / Beige



Side cover / Grey



### Needed tools :

- G2 key for pin "combo-pack"
- Key for nut
- or
- Ratchet key for nut + ratchet tool
- #6 Halen key
- 7/16" ratchet key + ratchet tool

Side cover / Translucent



## TERMINOLOGY

**BASE:** Lower part of the G2 SERVICE CUBE specially designed to host SERVICE COVERS.

**COVER:** Upper part of the G2 SERVICE CUBES allowing water and electricity lines to be passed directly inside the cubes. Available in 2 different models ( REGULAR COVER or SIDE COVER ) to ensure easy installation even when installed on the outside limits of our system. Equipped with a custom moulded hinge, our SIDE COVER model is extremely easy to ATTACH. Please make sure to use proper hardware when using the SIDE COVER. Both REGULAR COVERS and SIDE COVERS are available in a translucent finish. This option offers the same capabilities as the OPAQUE COVERS while being specially designed to be equipped with our custom built L.E.D. LIGHT SYSTEMS. For additional information, please see the ACCESSORY OWNER'S MANUAL.

## ASSEMBLY PROCEDURE ( refer to the G2 CUBES assembly procedure )

With the use of the provided tools, proceed with these key steps:

### PRIOR TO INSTALLATION

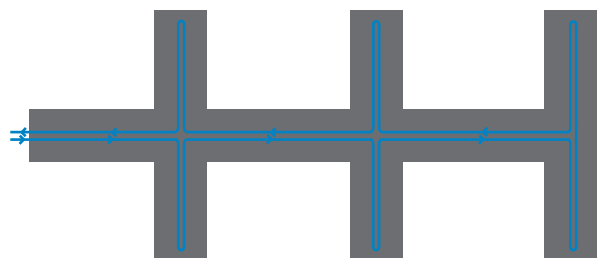
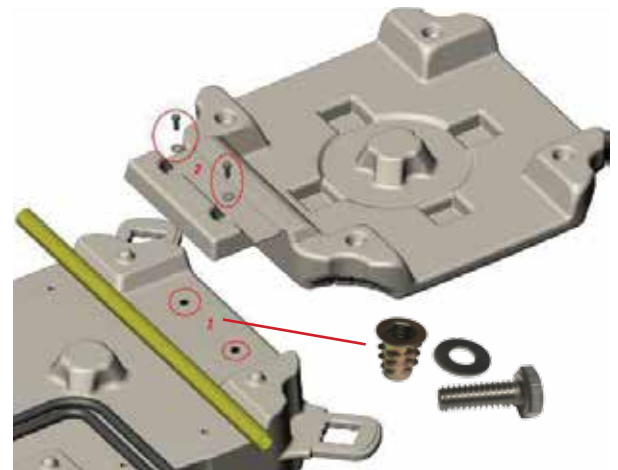
#### \*REGULAR COVER

If G2 SERVICE CUBE is surrounded by regular G2 CUBES, we suggest you assemble them without the covers. The process of passing the water and electricity lines should be scheduled once the overall layout is completed.

#### \*\*SIDE COVER

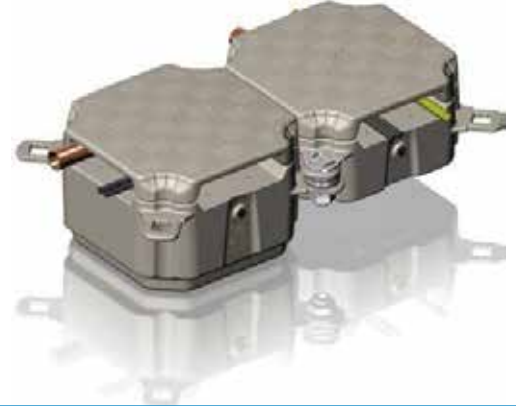
If G2 SERVICE CUBES are to be installed on the outskirts of the dock, make sure to attach the SIDE COVERS prior to assembly. Proceed carefully to prevent stripping the inserts treads. The process of passing the water and electricity lines should be scheduled once the overall layout is completed and will remain extremely simple. Make sure to screw the bottom part of the HINGE on the outskirts side of the cubes.

\*\*\*Make sure to configure the G2 SERVICE CUBE layout in a way that will necessitate as less cables and electric lines as possible. Make sure to optimize closed AND open circuits.



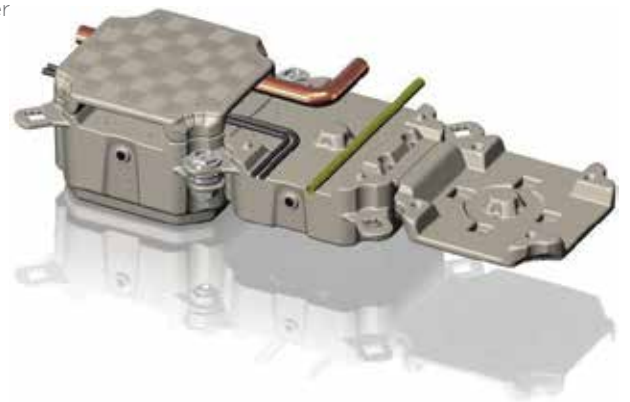
### WATER AND ELECTRICITY LINE INSTALLATION PROCEDURE (INSIDE THE DOCK)

- 1) Assemble the dock as usual without the **COVERS**.
- 2) Make sure not to tighten the pins adjacent to the service bases all the way as you will need to unscrew them.
- 3) This will leave a safe and clear path for your services.
- 4) Lay down all your service lines.
- 5) Start from one extremity and install the covers as you go.
- 6) Unscrew the pins enough in between 2 **COVERS** so that you can slide them in without removing the pins completely.
- 7) Once you have a few **COVERS** in, start tightening some pins so that the dock does not become too loose.
- 8) Continue the process.



### WATER AND ELECTRICITY LINE INSTALLATION PROCEDURE (ON THE OUTSKIRT OF THE DOCK)

- 1) Assemble the dock as usual without the **COVERS**.
- 2) Make sure not too tight the pins adjacent to the service bases all the way as you will need to unscrew them.
- 3) This will leave a safe and clear path for your services.
- 4) Lay down all your service lines.
- 5) Install all the hinges on the bases. (see instructions on [page 6](#))
- 6) Start from one extremity and install the **COVERS** as you go.
- 7) You will have to unscrew the pins a lot to be able to close the cover  
 Since you are on the edge of the dock this might leave the cube free of moving away from the dock. Trick, just insert a temporary pin on the perimeter tabs of the cubes you are working on.
- 8) Once you have a few covers in, start tightening some pins so that the dock does not become too loose.
- 9) Continue the process.



**TIP:** Electric cables and flexible pipes may also be fished underneath the covers with a long pole.

## G2 CONNECTING PIN



Available colors are GREY, BEIGE and BLUE  
 Other colors also available upon special request.

**Material/Composition :**  
 High-density polyethylene resin

**Surface :**  
 Flat & Anti-skid

**Dimensions :**  
 L : 24 cm (9.6") x W: 17.2 cm (6.88")  
 Shaft diameter : 4.547 cm (1.819")

**Wall thickness:**  
 .0750 cm (0.300")

**Strength :**  
 Vertical pull when coupled to a complete  
 G2 CUBE assembly (4 cubes) and a SLIDING NUT:

**over 1136kg (2500lbs)**

**Needed tool :**  
 -G2 key for pin "combo-pack"



## TERMINOLOGY

**HEAD:** Upper part of the G2 CONNECTING PINS designed with a flat and anti-skid surface. Surrounded by 2 notches that are needed to operate the KEY FOR G2 PIN "COMBO PACK" or regular KEY FOR G2 PIN.

**NOTCH:** Manufactured recess in the pin's head used to insert the key for screwing and unscrewing.

**SHAFT:** Male part of our coupling system, the threaded shaft is to be inserted in our CANDOCK SLIDING NUTS.

## ASSEMBLY PROCEDURE

1-During assembly process, always initiate the screwing process by hand. By doing so, pre-mature wear and tear will be prevented.

2-When the pins are properly inserted, proceed by screwing manually and/or mechanically with our pre-destined tools. Either the KEY FOR G2 PIN "COMBO PACK" or the regular G2 KEY FOR PINS (manual or drill) can be used.

3-Make sure to securely tighten the G2 CONNECTING PINS until snug, without over tightening them.

## TIPS

-When initially inserting the G2 CONNECTING PINS in place, you might want to firmly "tap" the PIN in place. By proceeding so, you will ensure a strong "initial" grip of the shaft treads into the CANDOCK SLIDING NUT. Likewise this "tap" will help you get the pin through the 4 cube tabs resting on top of the CANDOCK SLIDING NUT.



\*\*\* Make sure not to "tap" too hard on the pin to prevent the SLIDING NUT from unclipping. \*\*\*

-Once the assembly process is completed, align the NOTCHES of every G2 CONNECTING PINS using the manual key. This simple operation will allow to quickly locate any G2 CONNECTING PINS which could have unscrewed over time. Furthermore, the aesthetic of your dock will be enhanced.



-Always proceed with caution if using a power drill to fasten the G2 CONNECTING PINS, the drill can have tendency to "kick". Use protective footwear. Only use "double-handle" power drill to prevent wrist/arm injuries. If using power drill to un-crew pins, always loosen-up the pins manually prior to use the drill. ( \* Use "high torque/low speed" drill only )

## CANDOCK SLIDING NUT



**Material/Composition :**  
 High-density polyethylene resin



## TERMINOLOGY

**CHANNELS:** Specially designed clamps mounted on two opposite sides of the **CANDOCK SLIDING NUT** used to securely insert the nut on the cube tabs.



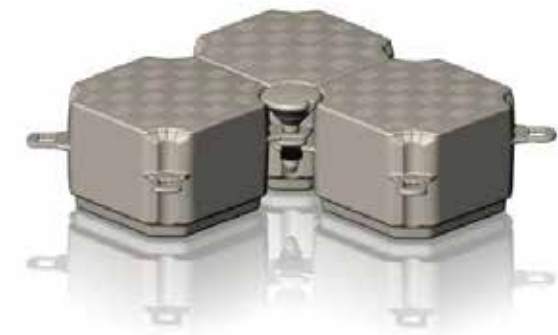
## ASSEMBLY PROCEDURE

1-Simply slide onto any tabs of our **G2 PRODUCT LINE** cubes to subsequently couple them with the **G2 CONNECTING PINS**.

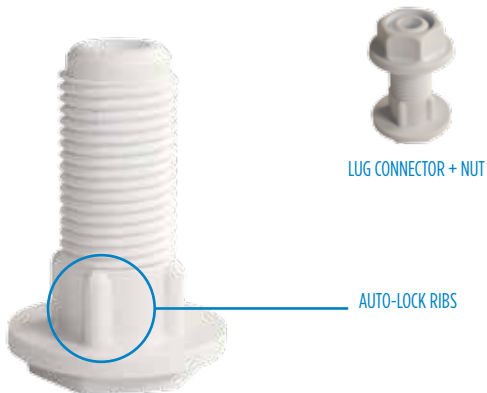


## TIPS

-Always make sure no **CANDOCK SLIDING NUT** are forgotten during the assembly process. Such a mistake could result in a huge **loss of time** as you will have to dismantle the whole structure 2 pieces to re-insert the missing nuts. Double-checking is quite simple compared to dismantling everything!



## CANDOCK LUG CONNECTOR



**Material/Composition :**  
 High-density polyethylene resin

**Needed tools :**  
 Key for nut  
 or  
 Ratchet key for nut + ratchet tool

**Required for:**

- ANCHORING PLATE FOR CHAINS
- EXTERIOR ANCHORING
- H.D. EXTERIOR ANCHORING S.S.
- ANCHORING ARMS
- ENGINE SUPPORT
- STABILIZATION BARS
- BUMPERS
- DOUBLE LAYER KIT

- VERTICAL BUMPERS
- WALL ANCHORAGE STEEL
- WALL ANCHORAGE S.S.
- SUPPORTS FOR MOORING WHIPS
- PWC WINCH
- WINCH FOR BOATS
- HINGES FOR CANDOCK

## TERMINOLOGY

**AUTO-LOCK RIBS:** Locking ribs that are easing the process of screwing and un-screwing the **CANDOCK NUTS** from the **CANDOCK LUG CONNECTORS** as it's locking itself automatically into the cube tabs.

## ASSEMBLY PROCEDURE

1-Simply insert the **CANDOCK LUG CONNECTORS** into the cube tabs wherever they are needed. Secure by screwing the proper **CANDOCK NUTS** with proper toolings. (**KEY FOR NUT** or **RATCHET KEY FOR NUT**)

**Mandatory for:**

- 1-Any **JETSLIDE** installation.
- 2-Any installation that will be exposed to heavier weather conditions.
- 3-A dock that will be subjected to heavy loads.
- 4-A dock that is 2 **CUBES** wide or less

## TIPS

-Make sure to strengthen the outskirts of every structure that is **2 cubes wide or less**. Fastening the periphery of your dock with **CANDOCK LUG CONNECTORS** and **CANDOCK NUTS** will greatly increase the overall stability of the structure and will also create a stronger dock unit. Platforms that are 3 cubes wide or more do not require these **CANDOCK LUG CONNECTORS** but will help when seeking for greater stability.

-We suggest that **CANDOCK LUG CONNECTORS** and **CANDOCK NUTS** are fastened prior to putting the dock in the water. Proceeding on the ground will simply ease the whole process.

-Make sure to include proper **CANDOCK SPACER** quantities if needed. The rule is quite simple; our basic product line uses **6 different tab heights ( 1, 2, 3, 4 for the REGULAR, LOW-PROFILE and ROWING CUBES and 5 + 6 for the CORNER CUBE )**. Knowing this, make sure to fill any "space" that could be left empty of tabs with these **CANDOCK SPACERS**.



## CANDOCK NUT



**Material/Composition :**  
 High-density polyethylene resin

**Required for :**  
 CANDOCK LUG CONNECTOR

**Needed tools :**  
 -Key for nut  
 or  
 -Ratchet key for nut + ratchet tool

### ASSEMBLY PROCEDURE

\*\*\*See [LUG CONNECTOR](#) assembly procedure.

\*\*\*Treads are tight between the [CANDOCK NUT](#) and the [CANDOCK LUG CONNECTOR](#) by design. Always use the provided tools to manipulate with ease.

## CANDOCK SPACER



**Material/Composition :**  
 High-density polyethylene resin

**Application:**

- JETSLIDE LUG CONNECTOR
- ANCHORING PLATE FOR CHAINS
- EXTERIOR ANCHORING
- H.D. EXTERIOR ANCHORING S.S.
- CHAIN ADJSUTER
- ANCHORING ARMS
- ENGINE SUPPORT
- STABILIZATION BARS
- BUMPERS
- DOUBLE LAYER KIT
- POST TYPE HANDRAIL
- CANDOCK HANDRAIL POST
- WINCH FOR BOATS
- HINGES FOR CANDOCK
- CANDOCK LADDER

- VERTICAL BUMPERS
- WALL ANCHORAGE STEEL
- WALL ANCHORAGE S.S.
- SUPPORTS FOR MOORING WHIPS
- PWC WINCH



### ASSEMBLY PROCEDURE

-If using a [CANDOCK LUG CONNECTOR](#), align auto-lock treads of the [CANDOCK LUG CONNECTOR](#) in the 4 notches found on the spacers.

-Make sure to include proper [CANDOCK SPACERS](#) quantities if needed. The rule is quite simple; our basic product line uses 6 different tab heights ( 1, 2, 3, 4 for the **REGULAR**, **LOW-PROFILE** and **ROWING CUBES** and 5 + 6 for the **CORNER CUBE** ). Knowing this, make sure to fill any "space" that could be left empty of tabs with these [CANDOCK SPACERS](#).

